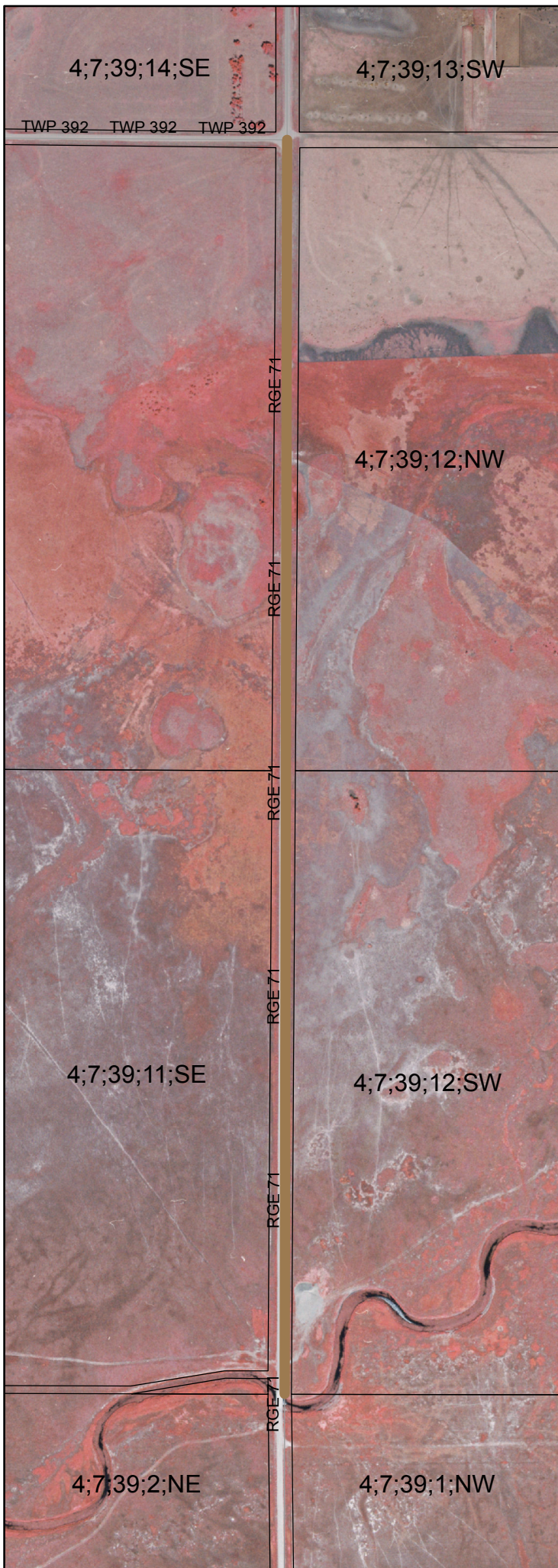


2012 Emergent Issue

The three failures on RRD 71 will be repaired by milling the top and reshaping. A heavy application of Calcium (3 to 4 Liters of per square meter will be applied). The driving surface will then be packed with the steel drum and wobbly packers. After a cure period a light cover for traction gravel will be applied if required.



Project #:
Year of Last Rehabilitation: 2007
Year of Last Gravelling: NA
Hours of Grading: NA
Road #: RGE 71
Division #: 5
Length of Project: 3 Failures,
approximately 3/4 mile
Traffic Count:
Traffic Count Date: